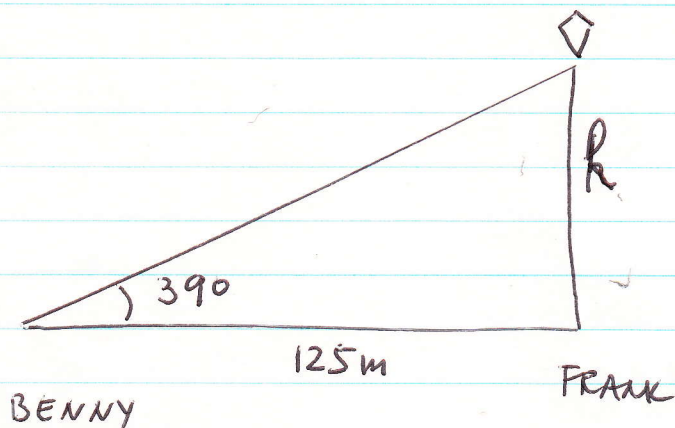


GEOM. ch. 12.2 p. 628-629 Total: 5 points

#2  
(3p)



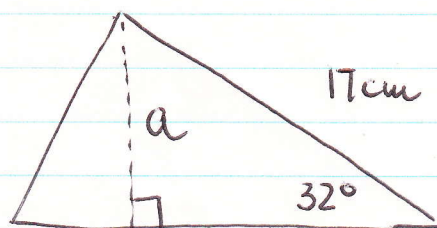
$$\tan 39^\circ = \frac{h}{125m}$$

$$\frac{0.81}{1} = \frac{x}{125}$$

$$x = 0.81 \cdot 125$$

$$\underline{x = 101m}$$

#8  
(2p)



$$\sin 32^\circ = \frac{a}{17}$$

$$\frac{0.53}{1} = \frac{a}{17}$$

$$a = 17 \cdot 0.53 \approx \underline{9cm}$$